



BUSH AGENCIES

Serving your business from bush to city!

www.bushagencies.com.au

P.O. Box 690, Quoiba, TAS 7310 Australia

Phone: 03 6424 5457 Fax: 03 6424 9969

Int. Ph: + 613 6424 5457 Int. Fax: + 613 6424 9969

Email: info@bushagencies.com.au

ABN 52 840 313 326

2014

Catalogue

Meet the Team.



From Left to Right: Naim Rihana (Owner Sydney), Colin Mcfarland (Sales Sydney), Jack Chand (Warehouse Manager), Simon Martin (Owner Tasmania), Frank Fuller (Sydney Sales), Rahim Habib (Packer Sydney), Patrick Kay (not pictured, but Salesman Tasmania).

This team has had a over 130 years combined experience in the shoe and shoe repair industry.
Call us today for expert advice.

Bush Agencies are your distributors for...



shoe & leather care products



www.bushagencies.com.au



History

In 2010 Simon Martin and Naim Rihana (Rihana Footwear International) purchased the Australasian Goodyear Shoe Rubber rights to go along with many other shoe repair products that they import.

Simon has a warehouse based in Tasmania and trades under Bush Agencies and Naim Rihana in Sydney trading under Rihana Footwear International. With these well positioned warehouses they are able to supply a reasonably quick service to anywhere in Australia. Their products are also sold into New Zealand. Their own "Patfield" brand continues to grow with a large range of products from laces to shoe stretchers to suede brushes which are available at very reasonable prices.

Within Tasmania, Simon has grown the Goodyear brand Half Soles and Heels to now outsell any other rubber brand and this trend looks set to continue right around Australia. The Caster Sheet from Spain is also taking over from Topy as Australia's favourite non-slip sheet.

The Emu Brillo Polish is also a top seller and is now the most popular shoe cream on the market.

About Simon: Simon started off his business in the garage as a 22year old in 2004 making Leathergoods then moved into a retail store in 2005. After this time he was approached to take on distributorships for Tasmania including well known brands such as Oakwood and Waproo. Simon says "I have really enjoyed the experience of serving customers all around Australia. Making my clients happy is what I aim to do each day." Simon still is largely involved with the running of his manufacturing/retail store, but is now focusing a lot more on the shoe repair wholesale business.

About Naim: Naim moved from Lebanon as a 18 year old over 40 years ago and started out as a salesman for a well know shoe repair supply business in Sydney. After some years there, he then decided to start his own shoe repair shop which was to be one of many. In 2008 these were sold when he decided to start a wholesale business for shoe repairers that he felt could get better service than what they were currently. Naim is responsible for sales within all of NSW & ACT.

Bush Agencies are your distributors for...



www.bushagencies.com.au

Contact :

Bush Agencies

Po Box 690, Quoiba, TAS 7310

Australia

Ph: 03 64245457

Fax:03 6424 9969

Ph: +61364245457 Fax: +613 64249969

Email for Orders or Information: info@bushagencies.com.au

Batteries



Product:	Maxwell Batteries (Made in Japan)
Applications:	Watches, Calculators, etc..
Features:	Quality
Sizes:	Large Range Available see Pricelist for further details.
Colour:	N/A
Thickness:	N/A
Other Info:	Toolkit for Watchbands & Replacing Batteries Available

Caster / DM

Trios
Bico
Sile
Duplo
Penta
Rueda
Tecnite
Spaicas
Tapacas
Casterfield
Puma Brillo



We are pleased to be Caster & DM Distributors for Australia! Quality products made in Spain.



Product:	Alpes Half Sole
Applications:	Men's Footwear
Features:	Rugged Design
Sizes:	Large
Colour:	Black
Thickness:	3.5mm
Other Info:	Made in Spain



Caster/DM

Product:	Alpes Heel
Applications:	Men's Footwear
Features:	Rugged Design
Sizes:	Large (No. 4)
Colour:	Black
Thickness:	8mm
Other Info:	Made In Spain. Other sizes may be available.



Product:	Caster Non Slip Pre Cut Half Soles
Applications:	Ladies & Men's Protective Soling
Features:	Good rubber content. Caster Logo.
Sizes:	Ladies 7/8, Ladies 9/10, Men's 9/10, Men's 11/12
Colour:	Black, Brown, or Cream
Thickness:	1.8mm
Other Info:	Other sizes may be available on request.

Other Caster & DM Products Available on Request



Product:	Caster Non Slip Sheet
Applications:	Ladies & Men's Protective Soling
Features:	Good rubber content. Caster Logo.
Sizes:	550mm x 1000mm
Colour:	Black, Brown, or Cream
Thickness:	1.8mm
Other Info:	Larger Size Sheet Available on Request.



Product:	Caster Tyre Tread Sheet (Crepilina)
Applications:	Men's Rugged Soling
Features:	Good rubber content. Tyre Tread Design
Sizes:	600mm x 830mm,
Colour:	Black or Brown
Thickness:	5mm or 8mm
Other Info:	Larger Size Sheet Available on Request.



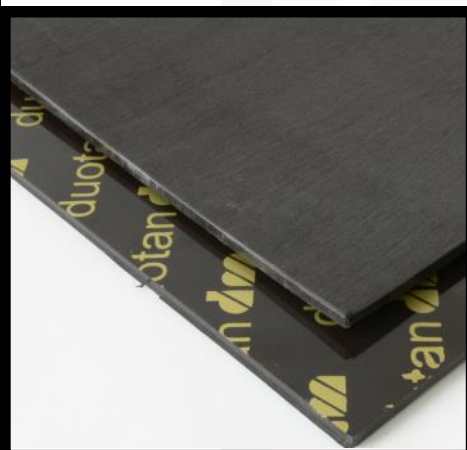
Product:	Chequ Brill Travel Brush & Polish Kit
Applications:	Men's or Ladies Footwear
Features:	Includes Cloth, Travel Brush, & Dauber Brush
Sizes:	N/A
Colour:	N/A
Thickness:	N/A
Other Info:	N/A



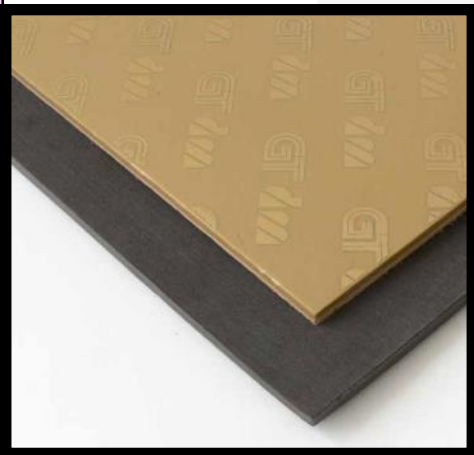
Product:	Sovereign Half Sole
Applications:	Ladies & Men's Protective Half Sole
Features:	Sovereign Logo
Sizes:	Small or Large
Colour:	Black
Thickness:	3.5mm
Other Info:	Other sizes may be available on request.



Product:	Bico Heeling 2 Ply Sheet
Applications:	Heels
Features:	Good Rubber Content. 2 Ply
Sizes:	250mm x 500mm
Colour:	Black or Brown
Thickness:	6mm
Other Info:	Made in Spain. Other colours may be available.



Product:	Duotan Heeling 2 Ply Sheet
Applications:	Heeling
Features:	Good Finish
Sizes:	250mm x 500mm
Colour:	Black or Brown
Thickness:	6mm
Other Info:	Available in Rubber or Leather Backing.



Caster/DM

Product:	GT 2 Ply Heeling Sheet
Applications:	Heeling
Features:	GT Logo, Matt Finish
Sizes:	250mm x 500mm
Colour:	Black (other colours may be available)
Thickness:	6mm
Other Info:	Made in Spain. Available in Rubber or Leather Backing

Product:	Caster Rug (Crepelina Rugal)
Applications:	Soling or Heeling
Features:	Serrated Design
Sizes:	600mm x 830mm
Colour:	Black or Brown
Thickness:	3mm, 4mm & 6mm
Other Info:	Other Sheet Sizes may be available.

Collonil/ Pedagog

Product:	Boot Jack (Pedag Brand)
Applications:	Taking of your Shoes.
Features:	Quality Timber.
Sizes:	N/A
Colour:	N/A
Thickness:	N/A
Other Info:	N/A

Product:	Combi White
Applications:	Men's or Ladies White Leather Shoes
Features:	Quality Product
Sizes:	75ml
Colour:	White
Thickness:	N/A
Other Info:	Made in Germany



Product:	Elegant Spray
Applications:	For all Colours.
Features:	Good Shine
Sizes:	200ml Spray Can
Colour:	Black, Brown or Neutral
Thickness:	N/A
Other Info:	Made in Germany



Product:	Exotic Spray
Applications:	Reptile & Exotic Leather.
Features:	Waterproofs & Preserves.
Sizes:	200ml
Colour:	Neutral
Thickness:	N/A
Other Info:	Made in Germany



Shoe Laces

Product:	Pedag Shoe Laces & Innersoles
Applications:	Shoes & Boots
Features:	Good Quality
Sizes:	Available on request or see pricelist for ones in stock.
Colour:	Various
Thickness:	Various
Other Info:	N/A

Other Collonil & Pedag Products Available on Request



Product:	Self Shine
Applications:	Men's or Ladies
Features:	Lanolin and Glass Bottle
Sizes:	50ml
Colour:	Black, Dk Brown, Lt. Brown, Mid Brown, Navy, Neutral, or Mahogany.
Thickness:	N/A
Other Info:	Made in Germany

Goodyear - Full Soles

Product:	Aquatred Lopro Full Sole
Applications:	Casual and Sports Wear
Features:	Long Wearing Durable/Gristle Rubber, Slip Resistant, Goodyear Logo and Tyre Design
Sizes:	8 & 10
Colour:	Neutral
Thickness:	6.5mm Forpart, 18mm Heel
Other Info:	N/A



Product:	Aquatred Muscle Full Sole
Applications:	Casual Wear
Features:	Flexi soft oil resisting compound, Lightweight & Comfortable design, Aquatred Tyre Design.
Sizes:	8, 10, 12 and 14
Colour:	Black or Brown
Thickness:	11mm Forepart, 26mm Heel
Other Info:	N/A



Introducing a new lightweight long lasting and more comfortable ride from the leader in rubber technology.

GT2 is $\left\{ \begin{array}{l} \text{More Comfortable} \\ \text{More Durable} \\ \text{Lighter Weight} \end{array} \right\}$ than any compound we've ever offered.

PERFORMANCE DRIVEN
for a better ride in your shoes. Try **GT2** in these traditional sole designs today.



GOODYEAR ONE GT2



SOFTYFLEX GT2



WATERWALKER GT2



Quality and Tradition meet today's need for GREEN with the new WAVE half sole. Featuring R51 restored rubber technology.



High quality long lasting protective half soles.

Contains 30% restored rubber.

New modern style available in Men's and Women's sizes.

© 2013 Filday Enterprise, Ltd. Goodyear (and winged foot design) is a trademark of the Goodyear Tire & Rubber Company, Akron, Ohio. Used under license by Filday Enterprise Ltd, Taichung, Taiwan, ROC. R51 is a registered trademark of Filday Enterprise, Ltd.

These Goodyear products to the left are new products for 2013 and will be replacing existing Waterwalker and Goodyear No.1 Designs as stock runs out.

The New Green Dot Half Soles are a new product and may only be available as in indent order for Australia.

Please ask as we may have them available by the time you are looking at this catalogue.

Goodyear - Full Soles



Product:	Aquatred Splash Full Sole
Applications:	Dress or Casual Wear
Features:	Flexisoft Oil Resistant Compound, Goodyear Logo and Aquatred Tyre Design.
Sizes:	Ladies 6 & 7, Men's 8 & 10
Colour:	Black or Brown
Thickness:	10.5mm Forepart, 19mm Heel
Other Info:	N/A



Product:	Crusader Full Sole
Applications:	Work & Outdoor Wear
Features:	Oil Resistant Compound, Superior Wear, Goodyear Logo
Sizes:	8, 10, 12 and 14
Colour:	Black
Thickness:	11mm Forepart, 25.5mm Heel
Other Info:	N/A



Product:	Detroit Full Sole
Applications:	Work Wear, Good for RM Williams Boots
Features:	Flat Sole with Chevron Design, Oil Resistant Compound, Distinct Goodyear Logo.
Sizes:	7, 8, 10, 12, 14
Colour:	Black or Brown
Thickness:	8.75mm
Other Info:	Matching Heel Available (700g Work Heel)



Product:	Goodyear No. 1 Full Sole
Applications:	Casual Wear
Features:	Lightweight Casual Lug Sole, Oil Resistant Flexi Soft Compound
Sizes:	8, 10, 12 and 14
Colour:	Black or Brown
Thickness:	11mm Forepart, 24mm Heel
Other Info:	Will be replaced with New GT2 Compound as stock runs out.

Goodyear - Full Soles



Product:	MTR Full Sole
Applications:	Rugged Outdoor or Hiking
Features:	Long Wearing Lug Sole Tyre Design with Distinctive Goodyear Logo
Sizes:	8/9, 10, 12, 13/14
Colour:	Black or Honey
Thickness:	12mm Forepart, 28mm Heel
Other Info:	N/A



Product:	Neolite Dress Full Sole
Applications:	Dress Wear
Features:	Neolite Logo, Long Wearing and Durable
Sizes:	14 (Universal)
Colour:	Black
Thickness:	5.5mm
Other Info:	N/A



Product:	Orlando Overlay Full Sole
Applications:	Work and Outdoor Wear
Features:	Oil Resisting Compound and Durable
Sizes:	8, 10, 12, & 14
Colour:	Black
Thickness:	6mm
Other Info:	N/A



Product:	Rancher Full Sole
Applications:	Work, Outdoor and Casual Wear
Features:	Durable yet Lightweight, Superior Resistance to Oils and Chemicals, Comfort and Cushioning.
Sizes:	8, 10, 12 and 14
Colour:	Black
Thickness:	15mm Forepart, 28mm Heel
Other Info:	N/A

Goodyear - Full Soles



Product:	Seattle Full Sole
Applications:	Rugged Outdoor or Hiking
Features:	Durable Traditional Lug Sole with Distinctive Goodyear Logo
Sizes:	8 (others can be ordered, minimum quantity apply)
Colour:	Black
Thickness:	12.5mm Forepart, 5mm Heel Section
Other Info:	Matching 100G Heel can be made.



Product:	Telos Full Sole
Applications:	Work and Casual Wear
Features:	Oil Resisting, Durable Sole Bonded to Eva Mid Sole with Good Compression. Lightweight but with Heavy Duty Rubber Toe Area for Extended Wear and Steel Toe Use.
Sizes:	8, 10, 12, & 14
Colour:	Black/Yellow
Thickness:	14.5mm Forepart, 34mm Heel
Other Info:	N/A



Product:	Tulsa Chem Full Sole
Applications:	Work, Casual and Outdoor Wear
Features:	Durable yet Lightweight, Superior Resistance to Oils and Chemicals, Comfort and Cushioning
Sizes:	8, 10, 12, & 14
Colour:	Black
Thickness:	Forepart 12.5mm, Heel 26mm
Other Info:	N/A



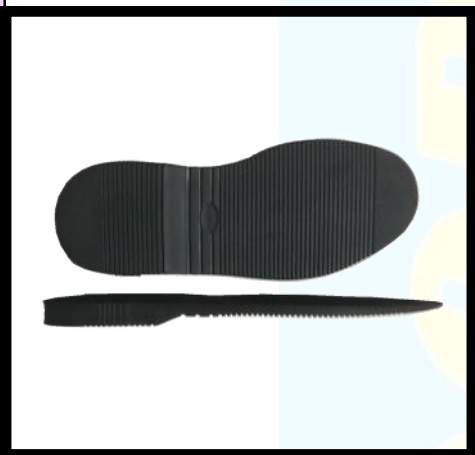
Product:	Tractionair Full Sole
Applications:	Casual Wear
Features:	Lightweight Casual Sole, Oil Resisting Flexi Soft Compound
Sizes:	8, 10, 12 and 14
Colour:	Black or Brown
Thickness:	14.5mm Forepart, 25.5mm Heel
Other Info:	N/A

Goodyear - Full Soles

Product:	Transport Sole Overlay
Applications:	Casual
Features:	Flexisoft Oil Resisting Compound, Goodyear Logo
Sizes:	8 (some left), 10, 12, 14, & 16
Colour:	Black, Brown, Oak, White, Grey
Thickness:	6.5mm
Other Info:	N/A



Product:	Waterwalker Eva Tech Full Sole
Applications:	Dress or Casual Wear
Features:	Flexisoft Oil Resisting Compound, Durable yet Lightweight.
Sizes:	8, 10, 12, & 14
Colour:	Black or Brown
Thickness:	11.25mm Forepart, 25mm Heel
Other Info:	Will be replaced with GT2 Compound.



Product:	Wright Full Sole
Applications:	Casual and Dress Wear
Features:	Durable and Lightweight with new GT2 Compound
Sizes:	8, 10, 12, & 14
Colour:	Black or Brown
Thickness:	10mm Forepart, 19mm Heel
Other Info:	N/A

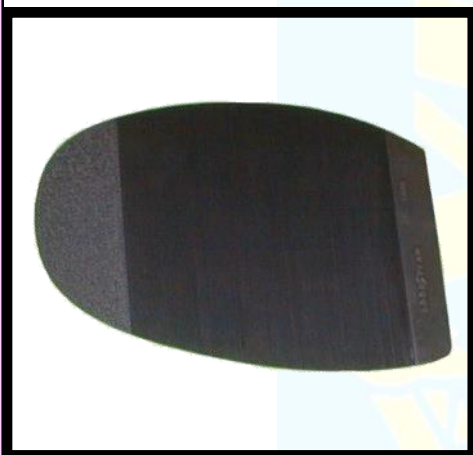


Product:	Whitewater Overlay
Applications:	Outdoor, Watersports, Athletic and Work
Features:	Chem-Grip Compound for Max Slip Resistance.
Sizes:	11 and 15
Colour:	Black or White
Thickness:	3.2mm
Other Info:	Size 11 will be discontinued.

Goodyear - Half Soles



Product:	Neolite Fineline Protective Half Sole
Applications:	Dress Footwear Men's
Features:	Offers protection and slip resistance. Long Wearing, Neolite and Goodyear Logo.
Sizes:	Large
Colour:	Black or Brown
Thickness:	5.5mm
Other Info:	N/A



Product:	Neolite Protective Half Sole
Applications:	Men's and Womens
Features:	Offers Protective and Slip Resistance, Long Wearing, Neolite and Goodyear Logo.
Sizes:	1.9mm Womens, 2.1mm Small, 2.1mm Medium, 2.1mm Large, and 4.2mm Large
Colour:	Black or Brown
Thickness:	See Above Sizes for Reference
Other Info:	N/A



Product:	Wave Half Sole
Applications:	Men's & Ladies
Features:	Eco Friendly with 30% Recycled Rubber. Modern Design.
Sizes:	Women's 1.9mm, Large Men's 2.1mm
Colour:	Black with Green Dot
Thickness:	See Above Sizes for Reference
Other Info:	Only available on request.

Goodyear - Heels



Product:	Crosshatch Neolite Cushion Heel
Applications:	Dress and Casual Wear
Features:	Long Wearing Cushion Comfort Compound, Neolite and Goodyear Logo.
Sizes:	Medium or Large
Colour:	Black or Brown
Thickness:	8mm
Other Info:	N/A

Goodyear - Heels



Product:	Lug Heel
Applications:	Work or Casual Wear
Features:	Long Wearing and Durable. Goodyear Logo
Sizes:	8, 10, 12, 14
Colour:	Neutral
Thickness:	5.5mm
Other Info:	N/A



Product:	Sebring Heel
Applications:	Men's and Womens Casual and Dress
Features:	Long Wearing, Cushion Comfort Compound, Goodyear Logo on Modern Design.
Sizes:	Ladies, Medium Men's, Large Men's
Colour:	Ladies Neutral Only, Men's Black or Brown.
Thickness:	6mm
Other Info:	8mm Thickness may be available on request.



Product:	Sebring Heel with Yellow Logo
Applications:	Men's Casual & Dress
Features:	Long Wearing, Cushion Comfort Compound, Yellow Goodyear Logo on Modern Design.
Sizes:	Medium or Large
Colour:	Black or Brown
Thickness:	8mm
Other Info:	N/A



Product:	Work Heel 700g
Applications:	Work & Dress Footwear
Features:	Oil Resisting, Goodyear Logo
Sizes:	7/8, 9/10, 11/12, and 13/14
Colour:	Black or Brown
Thickness:	18mm
Other Info:	Can be used with Detroit Full Sole

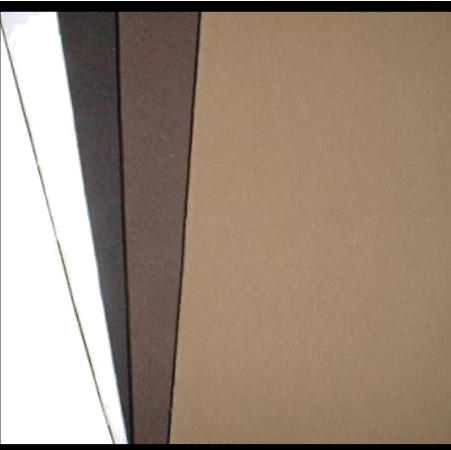
Goodyear - Sheetting



Product:	Chevron Soling Sheet
Applications:	Casual and Sports Soling
Features:	Longwearing and Flexible. Provides Good Traction.
Sizes:	455mm x 560mm
Colour:	Black or Cream
Thickness:	6.5mm (12ir)
Other Info:	N/A



Product:	Eva Diamond Sheet
Applications:	Buildup and Outsole Replacement
Features:	Durable yet Lightweight, Oil Resistance,
Sizes:	490mm x 960mm
Colour:	Black, Brown, White or Camel
Thickness:	6mm, 8mm, 10mm
Other Info:	Other Thicknesses may be available on request. High or Low Density Available



Product:	Eva Smooth Sheet
Applications:	Buildup and Outsole Replacement
Features:	Durable yet Lightweight, Oil Resistance,
Sizes:	490mm x 960mm
Colour:	Black, Brown, White or Camel
Thickness:	3mm, 6mm, 8mm, 10mm, 12mm, 20mm, 25mm
Other Info:	Available in Low or High Density

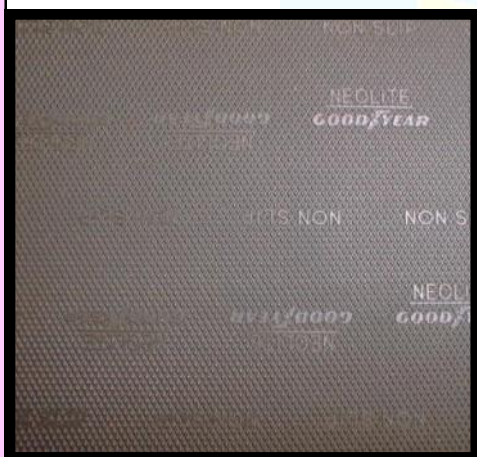


Product:	Lotus D Style Sheet (Rug)
Applications:	Fashion and Casual Wear
Features:	Crinkle Design, Flexible, Durable, and Longwearing Rubber
Sizes:	915mm x 915mm
Colour:	Black or Brown (Oak 3.5mm Only)
Thickness:	3.5mm, 5mm, and 6.4mm
Other Info:	N/A

Goodyear - Sheetings



Product:	Neolite Toplift Sheet
Applications:	Dress or Casual Heels
Features:	Long Wearing, Goodyear and Neolite Logo
Sizes:	455mm x 455mm
Colour:	Black, White, Brown, Oak, or Buck
Thickness:	6mm
Other Info:	N/A



Product:	Non Slip Protective Soling Sheet
Applications:	Soling Overlay
Features:	Slip Resistant Protection, Longwearing, Neolite & Goodyear Logo
Sizes:	455mm x 915mm
Colour:	2.1mm Black, White Brown, Oak or Buck. 4mm Black or Brown only.
Thickness:	2.1mm or 4mm
Other Info:	N/A

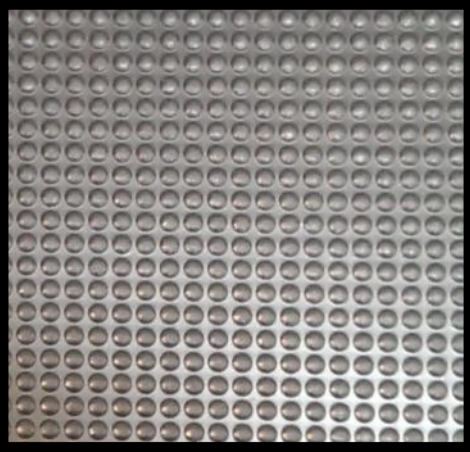


Product:	Non Slip Two Ply Sheet
Applications:	Dress or Casual Heels
Features:	Exceptional Wear, Comfort Compound, No Spreading and Good Nail Pull. Neolite & Goodyear Logo
Sizes:	455mm x 455mm
Colour:	Black or Brown
Thickness:	5.5mm
Other Info:	N/A



Product:	Nylex (Norena) Sheet
Applications:	Fashion and Casual Wear
Features:	Crinkle Design, Hard but Flexible, and Longwearing Rubber
Sizes:	1000mm x 1000mm
Colour:	Black, Brown, White, Oak or Buck
Thickness:	3.5mm
Other Info:	N/A

Goodyear - Sheeting



Product:	Ortho Soling Sheet
Applications:	Work or Casual
Features:	Lightweight with Good Slip Resistance. Pimple Design.
Sizes:	400mm x 460mm
Colour:	Black
Thickness:	4mm
Other Info:	Others colours may be available on request.

Knife Pouches



Product:	Leatherman Pouch with Double Clip (Large)
Applications:	N/A
Features:	Australian Made, and Quality Leather
Sizes:	Short or Long
Colour:	Cognac
Thickness:	N/A
Other Info:	Vertical or Horizontal Available



Product:	Leatherman Pouch with Clip (Small)
Applications:	N/A
Features:	Australian Made, and Quality Leather
Sizes:	Short or Long
Colour:	Cognac
Thickness:	N/A
Other Info:	Vertical or Horizontal Available



Product:	Stockman's Pouch with Clip
Applications:	N/A
Features:	Australian Made, and Quality Leather
Sizes:	Small, Medium or Large
Colour:	Cognac
Thickness:	N/A
Other Info:	Vertical or Horizontal Available



Knife Pouches

Product:	Swiss Army Knife Pouch
Applications:	N/A
Features:	Australian Made, and Quality Leather
Sizes:	Small or Large
Colour:	Cognac
Thickness:	N/A
Other Info:	Horizontal Only.



Machines

Product:	Key Cutting Machine
Applications:	Key Cutting
Features:	Quality Design
Sizes:	N/A
Colour:	N/A
Thickness:	N/A
Other Info:	Further Info on Request.



Product:	Sewing Patcher Machine
Applications:	Leather & Shoe Repairs
Features:	Quality Design. TAKING Brand.
Sizes:	N/A
Colour:	N/A
Thickness:	N/A
Other Info:	Further Info Available on Request.



Product:	Shoe Stretch Machine
Applications:	Shoes Men's or Ladies.
Features:	Quality.
Sizes:	N/A
Colour:	N/A
Thickness:	N/A
Other Info:	Made in Italy or Armenia.

Here to Help!

Our team is only too happy to help you source the products you can't find if we are able to. Please contact us if you can't find what you are looking for in our miscellaneous range.



Miscellaneous Products



Product:	Board Innersole
Applications:	Shoes, Boots etc...
Features:	Covered With Breathable Material. Long Lasting.
Sizes:	36, 38, 40, 43, & 45
Colour:	White
Thickness:	2.5mm
Other Info:	Clearance Prices !



Product:	Boot Leg Stretcher
Applications:	Stretching Boot Legs
Features:	Quality Timber Design. Stretches Top or Bottom of Boot.
Sizes:	N/A
Colour:	N/A
Thickness:	N/A
Other Info:	N/A

Other Glues May Be Available On Request !



Product:	Bostik Contact Bond
Applications:	Rubber & Leather
Features:	N/A
Sizes:	50ml Tube, 500ml Tin, or 4 Litre Container.
Colour:	Yellow
Thickness:	N/A
Other Info:	May be available in 20Litre.

Miscellaneous Products



Product:	Bostik Plastic Adhesive (1669)
Applications:	Plastic and Rubber
Features:	Good Bonding.
Sizes:	4 Litre Container
Colour:	Clear/Opaque
Thickness:	N/A
Other Info:	May be available in 20Litre.



Product:	Bostik (Shukem) Rubber Adhesive (83211c)
Applications:	Leather and Rubber
Features:	Superior Bonding
Sizes:	4 Litre Container
Colour:	Yellow
Thickness:	N/A
Other Info:	May be available in 20Litre.



Product:	Buckle & Strap (Pair)
Applications:	Ladies Shoes
Features:	Quality Leather Stitched.
Sizes:	6mm, or 8mm Width
Colour:	Black (Gold or Silver Buckle)
Thickness:	N/A
Other Info:	Other Colours May Be Available.



Product:	Cleanheel Stoppers
Applications:	Weddings or Races
Features:	Original Brand
Sizes:	Petite, Small or Medium
Colour:	Black or Clear
Thickness:	N/A
Other Info:	N/A

Miscellaneous Products



Product:	Cleanstar Vacuum Bags
Applications:	Replacement bags.
Features:	Huge range.
Sizes:	N/A
Colour:	N/A
Thickness:	N/A
Other Info:	See pricelist for full list of bags available. Bags are only stocked in our Tasmanian Warehouse.



Product:	Combination Zipper Lock
Applications:	Suitcases, Bags etc.
Features:	Good Quality and Easy To Use.
Sizes:	N/A
Colour:	Black, Silver, Red, Yellow & Green
Thickness:	N/A
Other Info:	N/A



Product:	Edge Ink (Kenda Farben)
Applications:	Leather, Bags, Belts, Shoes
Features:	Good Quality and Easy To Use.
Sizes:	25mm, 65mm, 134mm, 500mm
Colour:	Black or Dk Brown
Thickness:	N/A
Other Info:	Other Brand Edge Ink's Available



Product:	Elastic
Applications:	Boots and Shoes
Features:	High Quality
Sizes:	25mm, 65mm, 134mm, 500mm
Colour:	Black on one side, Brown on other. (500mm Black only)
Thickness:	N/A
Other Info:	Other Sizes and Types May be Available.



Miscellaneous Products

Product:	Footpetals Amazing Arches
Applications:	Fashion
Features:	Good Arch Support.
Sizes:	Ladies
Colour:	Black or Buttercup
Thickness:	N/A
Other Info:	Available from Tasmanian Warehouse Only.

Other Footpetal Products Available on Request !

Product:	Footpetals Heavenly Heelz (3 Pair Pack)
Applications:	Ladies Shoes
Features:	Stops Foot from Slipping
Sizes:	N/A
Colour:	Black or Buttercup
Thickness:	N/A
Other Info:	Available from Tasmanian Warehouse Only.

Product:	Footpetals Killer Kushionz
Applications:	Fashion Insole
Features:	Absorbs Shock, Keeps Feet Cool & Dry.
Sizes:	N/A
Colour:	Black or Buttercup
Thickness:	N/A
Other Info:	Available from Tasmanian Warehouse Only

Product:	Footpetals Sole Stopperz(2 pair Pack)
Applications:	Ladies Shoes
Features:	Protects & Non Slip
Sizes:	N/A
Colour:	Includes 1 Pair Black, 1 Pack White.
Thickness:	N/A
Other Info:	Available from Tasmanian Warehouse Only.

Miscellaneous Products



Product:	Footpetals Tip Toes
Applications:	Fashion
Features:	Stops Feet Sliding Forward
Sizes:	N/A
Colour:	Black or Buttercup
Thickness:	N/A
Other Info:	Available from Tasmanian Warehouse Only.



Product:	Gabee Leather Dew
Applications:	Handbags, Shoes etc.
Features:	Cleans, Softens, and Protects.
Sizes:	Tube 25g
Colour:	N/A
Thickness:	N/A
Other Info:	Not Suitable for Suede



Product:	Glue Pot
Applications:	Adhesive Glues
Features:	Good Brush, Quality Plastic, Easy to Use Design
Sizes:	Small, Medium, & Large
Colour:	N/A
Thickness:	N/A
Other Info:	N/A



Product:	Kangaroo Lacing
Applications:	Leathercraft, Necklaces, Belts, etc..
Features:	Strong Tensile Strength, Australian Bark Tanned.
Sizes:	20meter Hanks, 3mm, 4.7mm & 6mm widths.
Colour:	Natural, Saddle Tan, Whisky, Brandy, Black, White, Yellow, Blue, Pink, Gold, Silver, Jade, Purple, Burgundy, & Red
Thickness:	N/A
Other Info:	Available from Tasmanian Warehouse Only.

Miscellaneous Products



Product:	Key Rings (100 Pack)
Applications:	Key Rings
Features:	Quality Nickel.
Sizes:	16mm, 20mm, 25mm
Colour:	Nickel
Thickness:	N/A
Other Info:	Other sizes or colour may be available.



Product:	Ladies Heel Block
Applications:	Ladies High Heel Shoes.
Features:	Replica Wood Grain Finish on Plastic.
Sizes:	Various.
Colour:	Black or Brown (Uncovered also available)
Thickness:	N/A
Other Info:	Variety of other shapes are available. Check with us to see what we have available.



Product:	Leather Bends (per/kg)
Applications:	Mens or Ladies
Features:	Quality, Tanned in Italy
Sizes:	N/A
Colour:	Natural
Thickness:	3mm, 4mm, 5mm, or 6mm
Other Info:	Other thicknesses may be available.



Product:	Leather Luster
Applications:	Shoes, Boots and Defence Force.
Features:	High Shine
Sizes:	340g Kit
Colour:	Black
Thickness:	N/A
Other Info:	Available from Tasmanian Warehouse Only.

Miscellaneous Products



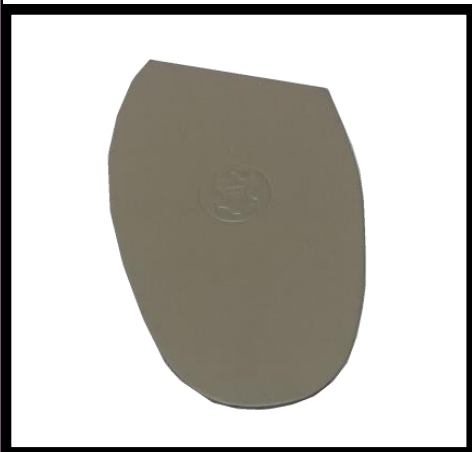
Product:	Leather Half Sole Ladies Pointed Toe
Applications:	Ladies Shoes
Features:	Quality Italian Leather & Pointed Toe
Sizes:	Ladies
Colour:	Natural
Thickness:	3mm or 3.5mm
Other Info:	Other Thickness May Be Available.



Product:	Leather Half Sole Ladies Round Toe
Applications:	Ladies Shoes
Features:	Quality Italian Leather & Round Toe
Sizes:	Ladies
Colour:	Natural
Thickness:	3mm or 3.5mm
Other Info:	Other Thickness May Be Available.



Product:	Leather Half Sole Gigantic
Applications:	Men's
Features:	Quality Italian Leather
Sizes:	Gigantic
Colour:	Natural
Thickness:	4mm, 4.5mm, 5mm, 5.5mm or 6mm
Other Info:	N/A

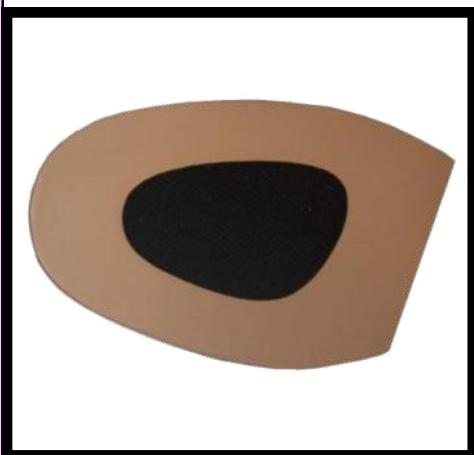


Product:	Leather Half Sole Large
Applications:	Men's
Features:	Quality Italian Leather
Sizes:	Large Mens
Colour:	Natural
Thickness:	4mm, 4.5mm, or 5mm
Other Info:	Other Thicknesses may be Available.

Miscellaneous Products



Product:	Leather Full Sole Jumbo
Applications:	Men's
Features:	Quality Italian Leather
Sizes:	Jumbo
Colour:	Natural
Thickness:	5mm or 5.5mm
Other Info:	Other Sizes & Thickness May Be Available.



Product:	Leather/Rubber Injected Half Sole
Applications:	Boots & Shoes
Features:	Quality Italian Leather with Injected Rubber Grip.
Sizes:	Large Men's, Gigantic Men's
Colour:	Natural
Thickness:	5mm or 5.5mm
Other Info:	Other Thicknesses & Sizes May Be Available.



Product:	Leather/Rubber Injected Heels
Applications:	Men's or Ladies
Features:	Quality Italian Leather with Vibram Rubber
Sizes:	Small or Medium
Colour:	Natural
Thickness:	7mm
Other Info:	Other styles available.



Product:	Leather Skins (Kid Lining) per/skin
Applications:	Patching, Innersoles, Lining etc.
Features:	Quality Kid Skin with Semi-Gloss Finish
Sizes:	N/A
Colour:	Black, Brown or Beige
Thickness:	1mm Approx
Other Info:	N/A

Miscellaneous Products



Product:	Nylon Webbing
Applications:	Handles and Reinforcing.
Features:	Quality Material.
Sizes:	20mm
Colour:	Black
Thickness:	N/A
Other Info:	Other sizes or colours may be available. (TAS Only)



Product:	Polish Wax Italian
Applications:	Polishing Edges of Leather etc. on Buffing Wheels.
Features:	Quality Material Made in Italy.
Sizes:	220mm x 80mm x 50mm Tub
Colour:	Black, Brown or Neutral.
Thickness:	N/A
Other Info:	N/A



Product:	RM Williams Heels
Applications:	Men's Dress or Work Boot
Features:	RM Logo
Sizes:	Medium
Colour:	Brown
Thickness:	8mm
Other Info:	Original RM Heel



Product:	Sanding Belts
Applications:	For Shoe Repair Machines
Features:	Quality Paper
Sizes:	80mm x 1150mm 24g, 35mm x 50mtr 24g Roll, 35mm x 440mm 24g, 35mm x 440mm 80g. Others Available
Colour:	N/A
Thickness:	N/A
Other Info:	We can have it made for you.

Miscellaneous Products



Product:	Sewing Machine Needles (10 Pack)
Applications:	Industrial
Features:	Made In Germany
Sizes:	14, 16, 18, 19, or 21
Colour:	N/A
Thickness:	N/A
Other Info:	Other Sizes May be Available.



Product:	Sewing Machine Thread
Applications:	Sewing Machines
Features:	Quality Materials.
Sizes:	N40 x 500mt, or N40 x 1500mt
Colour:	Black, Dark Brown, White, Red, Navy, Camel
Thickness:	N40
Other Info:	Other Sizes and Colours May Be available.



Product:	Shoe Buckle Light Weight
Applications:	Shoes
Features:	Lightweight Buckle
Sizes:	12mm, 16mm, 19mm, 25mm, 32mm
Colour:	Nickel
Thickness:	N/A
Other Info:	Available from Tasmanian Warehouse Only.



Product:	Shoe Goo
Applications:	Repairs and Protects.
Features:	Made in USA.
Sizes:	30g Small, 110g Large
Colour:	Clear or Black (Black in Large Size Only)
Thickness:	N/A
Other Info:	N/A

Miscellaneous Products



Product:	Stitched Leather Strapping per/mtr
Applications:	Shoes & Handbags
Features:	Quality Leather.
Sizes:	6mm or 10mm
Colour:	Black
Thickness:	N/A
Other Info:	Other Sizes and Colour May Be Available.



Product:	Ticket Roll (1000 x Tickets)
Applications:	Shoe Repair Shop
Features:	Good Options On Ticket for Repairer.
Sizes:	N/A
Colour:	Blue or Yellow
Thickness:	N/A
Other Info:	Other Colours or Own Name on Roll can be ordered.



Product:	Velcro per/mtr
Applications:	Replacement
Features:	Quality Material. Non Sticky Back.
Sizes:	25mm or 50mm
Colour:	Black 25mm & 50mm, Beige 25mm
Thickness:	N/A
Other Info:	Other Sizes & Colours May Be available. Can be sold in either hook or loop.



Product:	Wood Heel Block/ Build Up
Applications:	Men's or Ladies
Features:	Wood that Looks Like Leather.
Sizes:	Men's or Ladies
Colour:	N/A
Thickness:	19mm at Back
Other Info:	Easy to Use.



Miscellaneous Products

Product:	Zip and Runner No. 5 YKK
Applications:	Footwear and Handbags
Features:	Good Brand. Nylon
Sizes:	250mm, 350mm, 500mm
Colour:	Black or Brown
Thickness:	N/A
Other Info:	Other Sizes May Be Available. Continuous Available.



Product:	Zip Runner No. 5 YKK
Applications:	Footwear and Handbags
Features:	Good Brand.
Sizes:	No. 5 Locking or No.5 Non Locking
Colour:	Black or Brown
Thickness:	N/A
Other Info:	Other sizes may be available on request.



Product:	Zip and Runner Metal Open End
Applications:	Jackets
Features:	Quality Metal Zip.
Sizes:	600mm
Colour:	Black with Silver, Black with Antique, Brown with Gold.
Thickness:	N/A
Other Info:	N/A



Moneyworth & Best

Please see the separate M & B catalogue for a full list of products. Price are available in the price section of our catalogue.

*M & B manufactures a huge range of quality products.
The Emu polish is set to become
Australia's favourite shoe polish.*



Product:	Brillo Colour Spray (53 Colours Available)
Applications:	Leather, Vinyl & Plastic
Features:	Will not rub off. Fully Waterproof.
Sizes:	127g
Colour:	See Separate Catalogue for Full List of Colours.
Thickness:	N/A
Other Info:	N/A



Product:	Emu Brillo Polish
Applications:	Shoes, Belts, Handbags, & Wallets
Features:	Easy Applicator in Lid, Long Lasting, Instant Shine with no Buffing.
Sizes:	50ml
Colour:	Neutral, Black, White, Lt Brown, Brown, Dk Brown, Navy, & Burgundy
Thickness:	N/A
Other Info:	We guarantee you will be happy with this product !



Product:	Emu Rubber Heels
Applications:	Mens
Features:	Made In Italy, Long Lasting
Sizes:	Men's
Colour:	Black
Thickness:	7.5mm or 9mm
Other Info:	N/A



Product:	M & B Suede Heel Grips
Applications:	Boots or Shoes
Features:	Nicely Padded, Good Grip.
Sizes:	N/A
Colour:	Beige
Thickness:	N/A
Other Info:	1 Pair in Pack.



Product:	Furniture Care Kit
Applications:	Furniture & Automotive Leathers
Features:	Will not Stain Clothes. Protects against Cracking, Fading, & Marking.
Sizes:	Kit or Conditioning Cream 350ml Sold Separately.
Colour:	N/A
Thickness:	N/A
Other Info:	Made In Australia from all Natural Ingredients.

Other Oakwood Products Available on Request !



Product:	Glycerine Leather Cleaner Spray
Applications:	All finished Leathers.
Features:	Spray on & Wipe Off. Protects Stitching.
Sizes:	500ml
Colour:	N/A
Thickness:	N/A
Other Info:	Made In Australia



Product:	Glycerine Saddle Soap
Applications:	All Smooth Leather.
Features:	Cleans Gently and Easily.
Sizes:	150ml
Colour:	N/A
Thickness:	N/A
Other Info:	Made In Australia

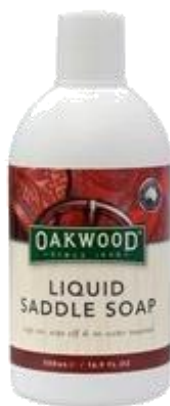


Product:	Leather Conditioner
Applications:	All Finished Leathers. Good for Boots, Saddles etc.
Features:	Will not stain clothes. Natural Australian Ingredients.
Sizes:	30ml, 125g Tube, 500ml Tub, 1 Litre Tub, or 4 Litre Bucket
Colour:	N/A
Thickness:	N/A
Other Info:	Made In Australia.

Oakwood



Product:	Leather Oil
Applications:	For Saddles, Harness, or other leather items.
Features:	Keeps Leather Soft & Pliable, Oils & Protects, Conditions & Shines.
Sizes:	500ml or 5 Litre
Colour:	N/A
Thickness:	N/A
Other Info:	Made In Australia



Product:	Liquid Saddle Soap
Applications:	Cleaning Finished Leather Goods.
Features:	Wipe On Wipe Off.
Sizes:	500ml
Colour:	N/A
Thickness:	N/A
Other Info:	Made in Australia.



Patfield Miscellaneous

Product:	Laces
Applications:	Shoes & Boots
Features:	Quality Materials.
Sizes:	Huge Range in 60cm, 75cm, 90cm, 100cm, 120cm, 150cm, 180cm. Flat, Fine Round and Hiker.
Colour:	Black, Brown, Beige, Navy, Red & White
Thickness:	Various.
Other Info:	Other Colours maybe available.



Product:	Key Blanks (100 Pack)
Applications:	Key Cutting
Features:	Good Quality
Sizes:	LW4, LW5, TE2, C1, CB34R, CB44R, LF24, LF31R, LF37, KW1, WC2, WC3
Colour:	Silver
Thickness:	N/A
Other Info:	Will be discontinued. Ask about our ILCA Range of Keys.

Patfield Miscellaneous



Product:	Key Cutter
Applications:	For Key Cutting Machine
Features:	Good Quality
Sizes:	Small
Colour:	N/A
Thickness:	N/A
Other Info:	Others sizes may be available.



Product:	Patfield Leather Belt
Applications:	Men's
Features:	Quality, Fine and Good Cutlery Design.
Sizes:	30mm & 36mm
Colour:	Black
Thickness:	N/A
Other Info:	Can be easily trimmed to suit any size.



Product:	Patfield 401 (MX Bon) Adhesive
Applications:	Shoe Industry
Features:	Medium Cure Speed
Sizes:	50g Bottle
Colour:	N/A
Thickness:	N/A
Other Info:	Our most popular atom type glue.



Product:	Shoe Stretch Hand Tool
Applications:	Men's or Ladies
Features:	Easy to Use
Sizes:	Men's or Ladies
Colour:	N/A
Thickness:	N/A
Other Info:	N/A



Product:	Boot Shaper Plastic Pair
Applications:	High Top Boots
Features:	Good Quality, Easy to Use.
Sizes:	N/A
Colour:	Varies
Thickness:	N/A
Other Info:	You may be able to request a certain colour.



Product:	Heel Grip Padded Pair
Applications:	Boots or Shoes
Features:	Quality Leather.
Sizes:	N/A
Colour:	Grey
Thickness:	N/A
Other Info:	Slightly Padded.



Product:	Jockey Whip Shoe Horn
Applications:	Footwear Fitting Aid
Features:	Attractive Stainless Steel & Jockey Whip Design. Leather Hand Grip.
Sizes:	Large 600mm Long.
Colour:	N/A
Thickness:	N/A
Other Info:	N/A



Product:	Kombi Polish Brush
Applications:	Shoe Polish Brush
Features:	Horsehair and Quality Timber
Sizes:	N/A
Colour:	Natural
Thickness:	N/A
Other Info:	N/A

Patfield Shoe Care



Product:	Polish Brush Small—Hard Bristles
Applications:	Good Seude Brush.
Features:	N/A
Sizes:	N/A
Colour:	N/A
Thickness:	N/A
Other Info:	N/A



Product:	Shoe Horn Aluminium Small
Applications:	Men's or Ladies Fitting Aid
Features:	Quality Aluminium
Sizes:	150mm
Colour:	N/A
Thickness:	N/A
Other Info:	N/A



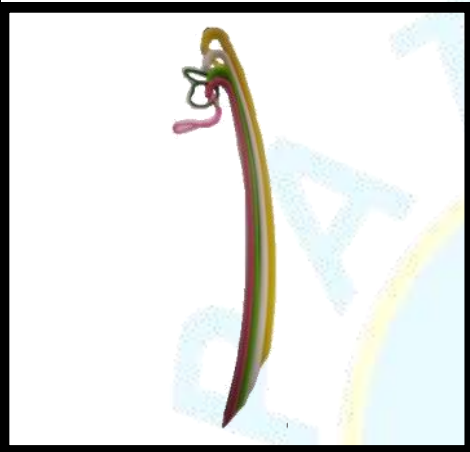
Product:	Shoe Horn Aluminium Quality Long
Applications:	Fitting Aid
Features:	Beautiful Quality. Can be Easily Engraved for a Gift.
Sizes:	530mm Long
Colour:	N/A
Thickness:	N/A
Other Info:	Best looking Shoe Horn To be Found !



Product:	Kombi Polish Brush
Applications:	Shoe Polish Brush
Features:	Horsehair and Quality Timber
Sizes:	N/A
Colour:	Natural
Thickness:	N/A
Other Info:	N/A



Product:	Shoe Horn Quality Red Plastic
Applications:	Men's or Ladies Fitting Aid
Features:	Quality Plastic with Rubber Loop.
Sizes:	Small 200mm, Large 400mm
Colour:	Red/Black
Thickness:	N/A
Other Info:	N/A



Product:	Shoe Horn Plastic Long
Applications:	Men's or Ladies Fitting Aid
Features:	Quality Hard Plastic
Sizes:	560mm
Colour:	Pink, Green, White or Yellow
Thickness:	N/A
Other Info:	N/A



Product:	Shoe Shapers Velvet Pair
Applications:	Shoes
Features:	Quality Velvet, Keeps Shoes in Shape
Sizes:	Small, Medium, Large
Colour:	Red Small, Blue Medium, or Green Large
Thickness:	N/A
Other Info:	N/A



Product:	Shoe Tree Plastic Ladies Pair
Applications:	Shoes
Features:	Economy Spring Design
Sizes:	Ladies
Colour:	Pink, Green or White
Thickness:	N/A
Other Info:	N/A



Patfield Shoe Care

Product:	Shoe Tree Plastic Men's Pair
Applications:	Men's Shoes
Features:	Economy Spring Design
Sizes:	Men's
Colour:	Lt Blue, Grey or Black
Thickness:	N/A
Other Info:	N/A



Product:	Shoe Tree Velvet Pair
Applications:	Ladies Shoes
Features:	Quality Velvet with Spring Design
Sizes:	Small or Large
Colour:	Red Small, or Green Large
Thickness:	N/A
Other Info:	N/A



Product:	Suede /Nubuck Brush
Applications:	Suede or Nubuck Leathers
Features:	Wire & Plastic Bristles. Good Quality.
Sizes:	N/A
Colour:	Black or Orange
Thickness:	N/A
Other Info:	N/A

Redback 100% Australian Boot Company



Product:	UBOK Bobcat Soft Toe Claret Kip
Applications:	Men's or Ladies
Features:	Good Quality Leather and Sole.
Sizes:	Sizes 2-15
Colour:	N/A
Thickness:	N/A
Other Info:	Australian Made (most popular design)



Product:	UEPU L/U Everest Soft Toe Lined Puma Aquapel
Applications:	Men's or Ladies, Hiking or Work Boot
Features:	Good Quality Leather and Sole. Lined for Comfort
Sizes:	Sizes 2-13
Colour:	Brown
Thickness:	N/A
Other Info:	Australian Made



Product:	USAOK L/U Alpine Safety Toe Claret Oil Kip
Applications:	Men's or Ladies Work Boot.
Features:	Good Quality Leather and Sole. Steel Toe.
Sizes:	Sizes 2-15
Colour:	Dark Brown
Thickness:	N/A
Other Info:	Australian Made

Other Redbacks Available, See Pricelist For Full List !



Product:	USBOK Bobcat Soft Claret Kip (Steel toe)
Applications:	Men's or Ladies
Features:	Good Quality Leather and Sole. Steel Toe.
Sizes:	Sizes 2-15
Colour:	Brown
Thickness:	N/A
Other Info:	Australian Made



Product:	RBBN Barman Soft Toe Black Nappa
Applications:	Men's or Ladies Casual, or for Chef's.
Features:	Good Quality Leather and Sole. Turns Away Water. Good Slip Resistance.
Sizes:	Sizes 2-13
Colour:	Black
Thickness:	N/A
Other Info:	Australian Made



Product:	Aqua Mini Stem Taps x 50 pair
Applications:	Ladies High Heels
Features:	Mini Stem.
Sizes:	Small or Large
Colour:	Black
Thickness:	N/A
Other Info:	N/A



Product:	Orange Star Supa Taps x 50 pair
Applications:	Ladies High Heels
Features:	Superior Durability. Orange Star Centre.
Sizes:	8, 9, 10, 12, 12L, 14, 15, 16, or 18SL
Colour:	Black/Orange
Thickness:	N/A
Other Info:	Made in the USA. Genuine Supa Tap Brand



Product:	Red Extra Mini Stem Taps x 50 pair
Applications:	Ladies High Heels
Features:	Mini Stem.
Sizes:	Small or Large
Colour:	Black
Thickness:	N/A
Other Info:	N/A



Product:	Standard Supa Taps x 50 pair
Applications:	Ladies High Heels
Features:	Genuine Supa Tap Brand.
Sizes:	7, 8, 9, 10, 11, 12, 12L, 12SL, 13, 14, 15, 16, 17, 18, 18L, 18SL, 20 & 34
Colour:	Black or Oak
Thickness:	N/A
Other Info:	Made in the USA. Other Shapes & Colours Available on Request.

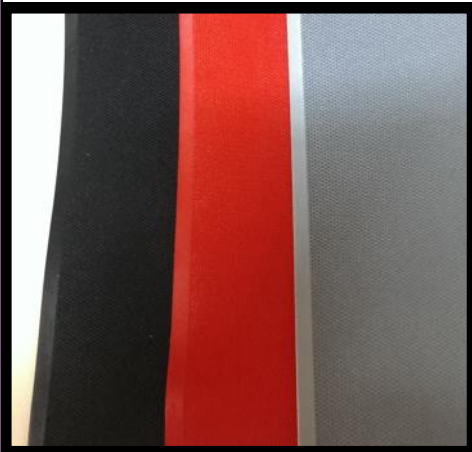
Supa Taps and Select Italia



Product:	Italia Select Taps on Strip
Applications:	Ladies High Heels
Features:	Good Quality. Select Italia Logo
Sizes:	Small or Large
Colour:	Small in Black, Brown or Beige. Large Black Only
Thickness:	N/A
Other Info:	Made in Italy

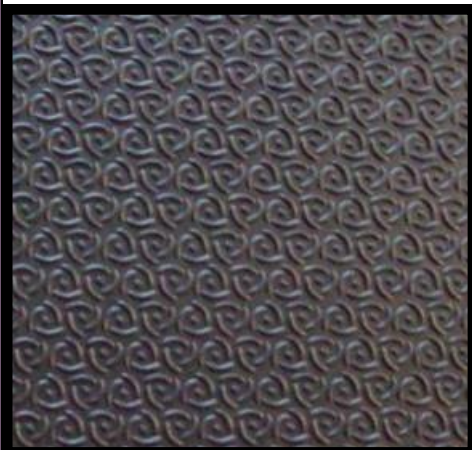


Product:	Italia Select Vulca Top
Applications:	Dress or Casual Shoes
Features:	Quite, Smooth Finish. Two Ply
Sizes:	250mm x 350mm
Colour:	Black, Dark Brown, or Oak
Thickness:	6mm
Other Info:	Made in Italy



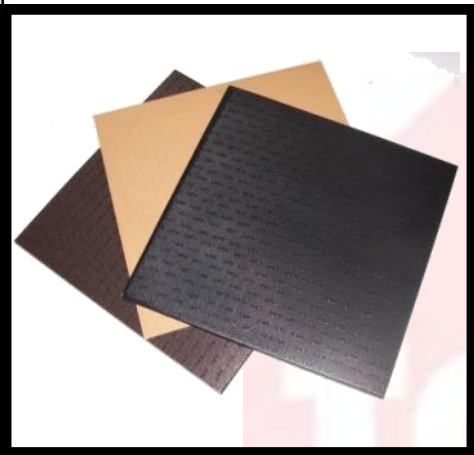
Product:	Select Italia Coloured Soling Sheet
Applications:	Protective Soling. Dance Shoes or High Fashion
Features:	Thin Rubber with Material Backing.
Sizes:	200mm x 600mm
Colour:	Black, Lt Brown, Dk Brown, Red, White, Silver or Gold
Thickness:	1.4mm
Other Info:	Can be Cut into Half Soles on Request.

Topy Sheetting

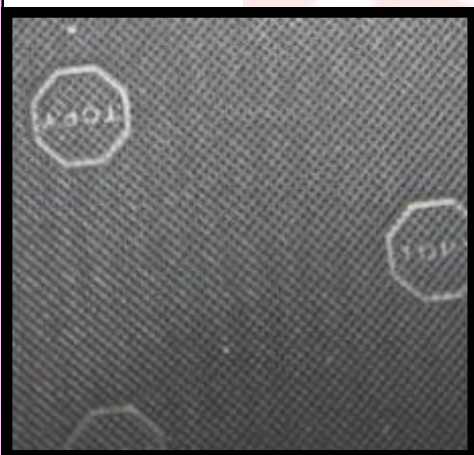


Product:	Topy Cellotop
Applications:	Soling
Features:	Long Lasting but Soft. Good Grip.
Sizes:	600mm x 970mm
Colour:	Black
Thickness:	4mm
Other Info:	Other Colours & Sizes May Be Available

Topy Sheetinq



Product:	Topy Vulca Top
Applications:	Dress or Casual Wear.
Features:	Quality Material. Long Lasting.
Sizes:	250mm x 250mm
Colour:	Black, Dark Brown or Beige.
Thickness:	N/A
Other Info:	Other Size Sheets May be Available.



Product:	Topy Non Slip Sheet
Applications:	Soling Protective Overlay
Features:	Slip Resistant Protection and Long Wearing
Sizes:	600mm x 970mm
Colour:	Black, Dk Brown, Beige, Caramel, or Red
Thickness:	1.5mm or 1.8mm
Other Info:	N/A

Other Topy Products Available on Request.

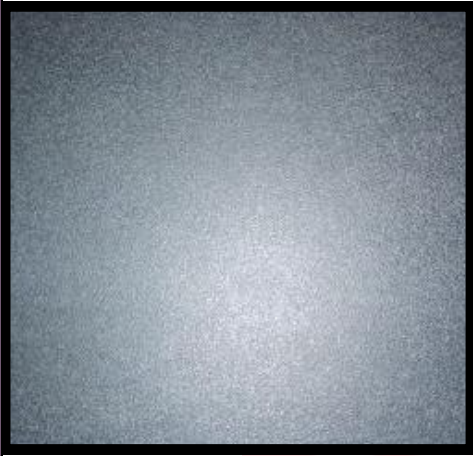


Product:	Topy Rug
Applications:	Soling or Heeling
Features:	Long Lasting but Soft. Good Grip.
Sizes:	600mm x 970mm
Colour:	Black, Dark Brown, Beige, Caramel
Thickness:	3mm, 4mm, 5mm, or 6mm
Other Info:	Other Colours May be Available on Request.

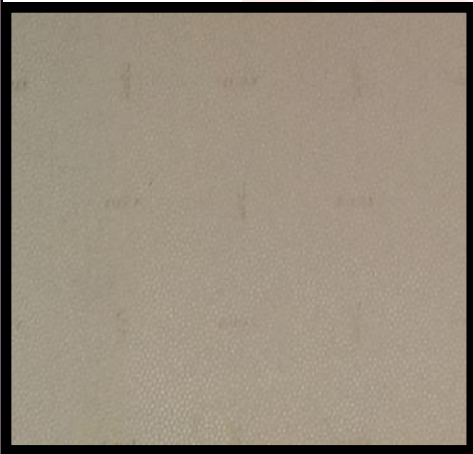


Product:	Topy Strong
Applications:	Heeling
Features:	Hard Long Wearing.
Sizes:	600mm x 970mm
Colour:	Black, Dark Brown, Beige or Caramel
Thickness:	6mm
Other Info:	N/A

Topy Sheetting

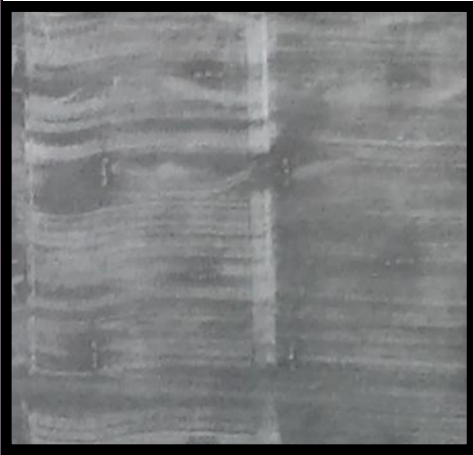


Product:	Topy Sem
Applications:	Soling or Heeling
Features:	Quality Material. Long Lasting but Soft.
Sizes:	600mm x 970mm
Colour:	Black or Dk Brown.
Thickness:	3mm, 3.5mm, 4mm or 5mm
Other Info:	Other Size Sheets & Colours May be Available.



Product:	Topy Vera Top
Applications:	Heeling
Features:	Hard Wearing
Sizes:	400 x 620mm
Colour:	Black or Beige
Thickness:	6mm
Other Info:	Other Colours May Be Available.

Other Topy Products Available on Request.

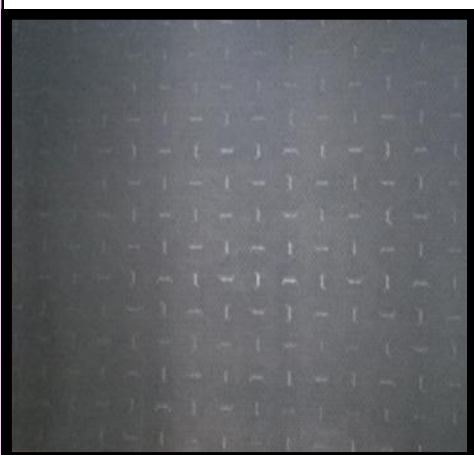


Product:	Topy Wearite
Applications:	Heeling
Features:	Hard Wearing
Sizes:	530mm x 620mm
Colour:	Black
Thickness:	6mm
Other Info:	Other Colours May be Available on Request.

Topy Heels/Half Soles



Product:	Topy Heels Neutral Supa Top
Applications:	Men's
Features:	Modern Design
Sizes:	Small (172), Medium (174), Large (176)
Colour:	Neutral
Thickness:	6.5mm
Other Info:	N/A



Topy Heels/Half Soles

Product:	Topy Heels Tempo Red Dot
Applications:	Casual or Dress.
Features:	Red Dot. Long Wearing.
Sizes:	Small(172), Medium (174), or Large (176)
Colour:	Black or Brown
Thickness:	8mm
Other Info:	N/A

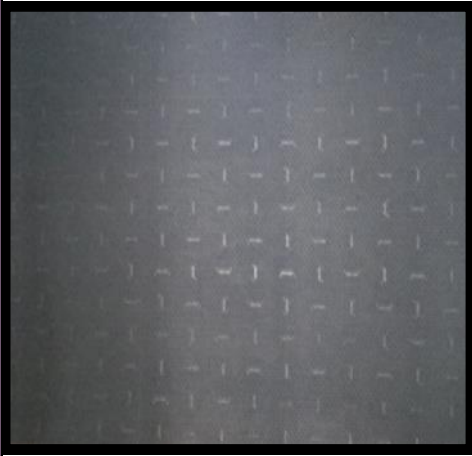
Product:	Ladies Precut Topy 1.8mm Half Soles
Applications:	Soling Protective Overlay
Features:	Slip Resistant Protection and Long Wearing
Sizes:	No. 2(7/8), No.4 (9/10)
Colour:	Black
Thickness:	1.8mm
Other Info:	Other Sizes, Colours & Thickness Available on Request.

Product:	Men's Precut Topy 1.8mm Half Soles
Applications:	Soling Protective Overlay
Features:	Slip Resistant Protection and Long Wearing
Sizes:	No. 3(9/10), No.4 (11/12)
Colour:	Black
Thickness:	1.8mm
Other Info:	Other Sizes, Colours & Thickness Available on Request.

Vibram Sheetting

Product:	Duplo Heeling Sheet
Applications:	Heels
Features:	Quite. Quality Material.
Sizes:	560mm x 860mm
Colour:	Black or Brown
Thickness:	6mm
Other Info:	Other Colours May Be Available on Request.

Vibram Sheetting



Product:	Soling Sheet
Applications:	Soling Men's or Ladies
Features:	Quality Material.
Sizes:	560mm x 860mm
Colour:	Black
Thickness:	3mm
Other Info:	N/A

Other Vibram Products Available on Request.

Watchbands & Accessories



Product:	Leather With Cover (UI-SP5)
Applications:	Men's Work Cover
Features:	Easy To Use.
Sizes:	N/A
Colour:	Black or Brown
Thickness:	N/A
Other Info:	Available from Tasmanian Warehouse Only



Product:	Leather Padded (UI-LP10)
Applications:	Men's or Ladies
Features:	Quality Leather
Sizes:	10mm, 12mm, 14mm, 16mm, 18mm or 20mm
Colour:	Brown
Thickness:	N/A
Other Info:	Available from Tasmanian Warehouse Only

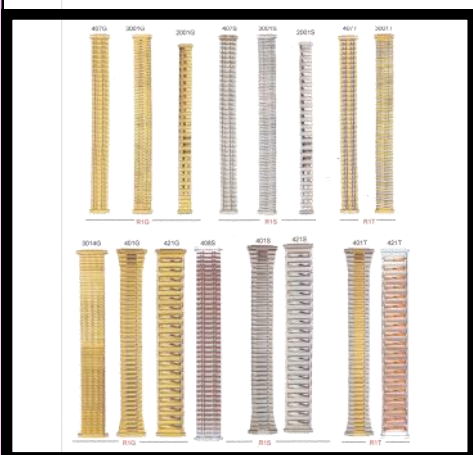


Product:	Plastic Band
Applications:	Men's Watches
Features:	Good Quality.
Sizes:	12mm (UI-C13), 14mm (UI-C12), 16mm, 18mm (UI-C13), 20mm (UI-123) or 22mm (UI-C114)
Colour:	Black
Thickness:	N/A
Other Info:	Available from Tasmanian Warehouse Only

Watchbands & Accessories



Product:	Nylon Velcro
Applications:	Men's Sports Watches
Features:	Quality Material.
Sizes:	Black 12mm, 16mm, 18mm or 20mm. Army Green 16mm, 18mm or 20mm. Blue 12mm, 16mm or 20mm.
Colour:	Black, Army Green, or Blue
Thickness:	N/A
Other Info:	Available from Tasmanian Warehouse Only

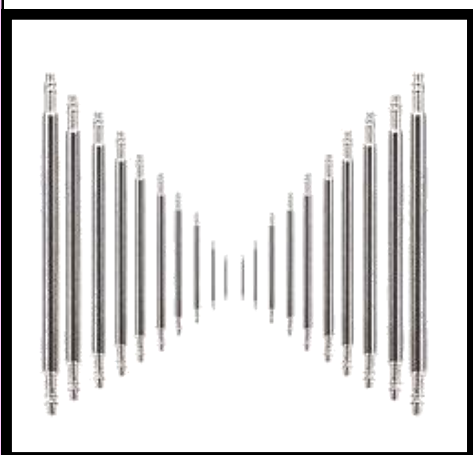


Product:	Metal Stretch Bands
Applications:	Men's or Ladies
Features:	Easy To Fit.
Sizes:	Ladies or Men's.
Colour:	Silver(R1S), Gold(R1G) or Two Tone (R1T)
Thickness:	N/A
Other Info:	Available from Tasmanian Warehouse Only

See Pricelist For A Full List Of Watchbands Available.



Product:	Stretch Extra Long Silver (UI-U103)
Applications:	Men's
Features:	Extra Long Design.
Sizes:	N/A
Colour:	Silver
Thickness:	N/A
Other Info:	Available from Tasmanian Warehouse Only



Product:	Watchband Pins
Applications:	Men's or Ladies Watches
Features:	Good Quality.
Sizes:	20pack (8mm to 22mm), 10 pack (24mm) Others Sizes May Be Available.
Colour:	N/A
Thickness:	N/A
Other Info:	Available from Tasmanian Warehouse Only

Products Not In Catalogue

We carry a large range of products not listed in our catalogue. So if you require something, please ask as we may have it available. Some of our products include Randing, Leather, Rivets, & Leathercraft Tools.

We would like to take this opportunity to thank you for your business, and if you haven't dealt with us before, thank you for taking the interest to have a look at this catalogue. We look forward to being able to give you the best service and prices that we are able to.

**Thanks again
-The Team**

